

TYPE 1 - 4no  
NW01,02,04,05

Structural Opening  
Opening Size  
Specification

Exg opening  
1915mm W x 2470mm H;  
Smart Systems Ltd -  
Smart Allitherm  
Heritage  
N/A  
28mm/lam inner/  
toughened outer  
Glazing  
PPC aluminium

Fire Rating  
Glazing

Finish

TYPE 2 - 5no  
NW03,32,48,52,56

Structural Opening  
Opening Size  
Specification

Exg opening  
1230mm W x 2075mm H;  
Smart Systems Ltd -  
Smart Allitherm  
Heritage  
N/A  
28mm/lam inner/  
toughened outer  
Glazing  
PPC aluminium

Fire Rating  
Glazing

Finish

TYPE 3 - 20no  
NW29,30,31,33,34,35,37,38,  
39,40,44,45,46,47,49,50,51,  
53,54,55

Structural Opening  
Opening Size  
Specification

Exg opening  
1915mm W x 2075mm H;  
Smart Systems Ltd -  
Smart Allitherm  
Heritage  
N/A  
28mm/lam inner/  
toughened outer  
Glazing  
PPC aluminium

Fire Rating  
Glazing

Finish

TYPE 4 - 2no  
ND01,02

Structural Opening  
Opening Size  
Specification

Exg opening  
1915mm W x 3400mm H;  
Smart Systems Ltd -  
Smart Allitherm  
Heritage  
N/A  
28mm/lam inner/  
toughened outer  
Glazing  
PPC aluminiumLow  
level insulated panel -  
Colour TBC  
Adams Rite fire door  
940 - panic bar

Fire Rating  
Glazing

Finish

Ironmongery

TYPE 5 - 1no  
ND03

Structural Opening  
Opening Size  
Specification

Exg opening  
1600mm W x 2140mm H;  
Smart Systems Ltd -  
Smart Allitherm  
Heritage  
N/A  
28mm/lam inner/  
toughened outer  
Glazing  
PPC aluminiumLow  
level insulated panel -  
Colour TBC  
Adams Rite fire door  
940 - panic bar

Fire Rating  
Glazing

Finish

Ironmongery

TYPE 6 - 5no  
NW57,58,60,64,68

Structural Opening  
Opening Size  
Specification

Exg opening  
1230mm W x 455mm H;  
Smart Systems Ltd -  
Smart Allitherm  
Heritage  
N/A  
28mm/lam inner/  
toughened outer  
Glazing  
PPC aluminium  
Refer to drawing  
J4804-90 Upstand  
Detail

Fire Rating  
Glazing

Finish  
Note

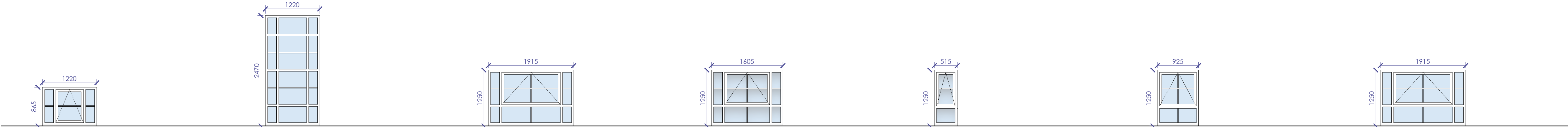
TYPE 7 - 7no  
NW59,61,62,63,65,66,67

Structural Opening  
Opening Size  
Specification

Exg opening  
1915mm W x 455mm H;  
Smart Systems Ltd -  
Smart Allitherm  
Heritage  
N/A  
28mm/lam inner/  
toughened outer  
Glazing  
PPC aluminium  
Refer to drawing  
J4804-90 Upstand  
Detail

Fire Rating  
Glazing

Finish  
Note



TYPE 8 - 1no  
NW06

Structural Opening  
Opening Size  
Specification

Exg opening  
1220mm W x 865mm H;  
Smart Systems Ltd -  
Smart Allitherm  
Heritage  
N/A  
28mm/lam inner/  
toughened outer  
Glazing  
PPC aluminium

Fire Rating  
Glazing

Finish

TYPE 9 - 1no  
NW36

Structural Opening  
Opening Size  
Specification

Exg opening  
1220mm W x 2470mm H;  
Smart Systems Ltd -  
Smart Allitherm  
Heritage  
N/A  
28mm/lam inner/  
toughened outer  
Glazing  
PPC aluminium

Fire Rating  
Glazing

Finish

TYPE 10 - 1no  
NW07

Structural Opening  
Opening Size  
Specification

Exg opening  
1915mm W x 1250mm H;  
Smart Systems Ltd -  
Smart Allitherm  
Heritage  
N/A  
28mm/lam inner/  
toughened outer  
Glazing  
PPC aluminium  
High level window to  
have teleflex

Fire Rating  
Glazing

Finish  
Note

TYPE 11 - 4no  
NW08,09,11,12

Structural Opening  
Opening Size  
Specification

Exg opening  
1605mm W x 1250mm H;  
Smart Systems Ltd -  
Smart Allitherm  
Heritage  
N/A  
28mm/lam inner/  
toughened outer  
Glazing - Obscured  
PPC aluminium  
High level window to  
have teleflex

Fire Rating  
Glazing

Finish  
Note

TYPE 12 - 2no  
NW10,13

Structural Opening  
Opening Size  
Specification

Exg opening  
515mm W x 1250mm H;  
Smart Systems Ltd -  
Smart Allitherm  
Heritage  
N/A  
28mm/lam inner/  
toughened outer  
Glazing - Obscured  
PPC aluminium  
High level window to  
have teleflex

Fire Rating  
Glazing

Finish  
Note

TYPE 13 - 5no  
NW14,27,41,42,43

Structural Opening  
Opening Size  
Specification

Exg opening  
925mm W x 1250mm H;  
Smart Systems Ltd -  
Smart Allitherm  
Heritage  
N/A  
28mm/lam inner/  
toughened outer  
Glazing  
PPC aluminium

Fire Rating  
Glazing

Finish

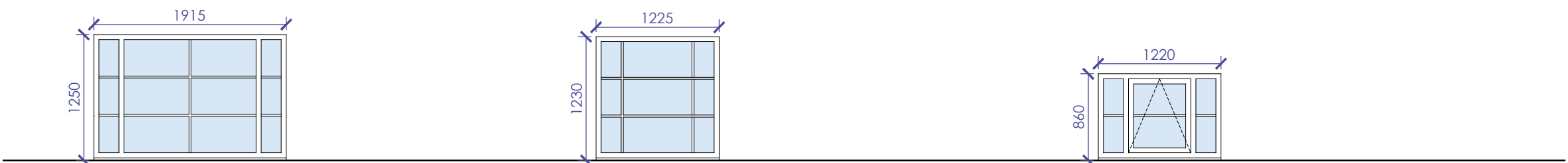
TYPE 14 - 7no  
NW15,17,18,20,22,24,26

Structural Opening  
Opening Size  
Specification

Exg opening  
1915mm W x 1250mm H;  
Smart Systems Ltd -  
Smart Allitherm  
Heritage  
N/A  
28mm/lam inner/  
toughened outer  
Glazing  
PPC aluminium

Fire Rating  
Glazing

Finish



TYPE 15 - 4no  
NW16,19,23,25

Structural Opening  
Opening Size  
Specification

Exg opening  
1915mm W x 1250mm H;  
Smart Systems Ltd -  
Smart Allitherm  
Heritage  
N/A  
28mm/lam inner/  
toughened outer  
Glazing  
PPC aluminium

Fire Rating  
Glazing

Finish

TYPE 16 - 1no  
NW21

Structural Opening  
Opening Size  
Specification

Exg opening  
1225mm W x 1230mm H;  
Smart Systems Ltd -  
Smart Allitherm  
Heritage  
N/A  
28mm/lam inner/  
toughened outer  
Glazing  
PPC aluminium

Fire Rating  
Glazing

Finish

TYPE 17 - 1no  
NW28

Structural Opening  
Opening Size  
Specification

Exg opening  
1220mm W x 860mm H;  
Smart Systems Ltd -  
Smart Allitherm  
Heritage  
N/A  
28mm/lam inner/  
toughened outer  
Glazing  
PPC aluminium

Fire Rating  
Glazing

Finish

SPECIFICATION NOTES:

WINDOWS AND EXTERNAL DOORS

Where noted on plan, existing windows and doors are to be replaced. Existing units are to be carefully removed and disposed. The contractor is to allow for making good around the openings upon completion.

NOTE: Windows / glazed screens / doors may have asbestos packers above windows which will need to be removed by a licensed contractor.

WINDOWS:

Replacement windows to be Smart Systems (Tel: 01934 876100) - Allitherm Heritage top hung units to all to suit existing structural openings. Windows consist of the following sections / profiles - see elevations for further details:

Allow to carefully take down all existing blinds (where applicable), set aside and re-fix on completion of window replacement.

Additional requirements:  
Allow to supply and fit Teleflex handles to all high level windows.

EXTERNAL DOORS:

Replacement external doors to be SMART Systems (Tel: 01934 876100) - Smart- Heritage Door to suit existing openings. Windows and external doors are to be powder coated aluminium units, all with double glazed units with "E" glass to inner pane, 28mm double glazing to new windows; 24mm to new doors.

Glazing to be 6mm toughened glass internal pane with 6mm toughened glass to outer pane, all to meet BS 6206. External frames to be fully sealed to masonry all round with proprietary sealant.

All doors and opening lights to be draught stripped and severe weather rated. All beading to be security sealed externally. Safety glass to BS 6206: 1981 to be provided to all doors and side screens to 1500mm and to windows and screens to be 800mm above floor level.

Doors and windows to provide min 1.6W/m<sup>2</sup> K thermal performance. All new doors and windows to be fitted with trickle ventilators. All rooms to have opening windows as indicated on the Drawings.

0 0.5m 1m 1.5m 2m 2.5m 3m

1:50

DO NOT SCALE FROM THIS DRAWING  
EXCEPT FOR PLANNING PURPOSES ONLY  
Copyright reserved

This drawing is issued for the sole & exclusive use of the named recipient. Distribution to any third party is on the strict understanding that no liability is accepted by YMD Boon Ltd for any discrepancies, errors or omissions that may be present & no guarantee is offered as to the accuracy of information shown.  
All dimensions to be checked on site & any discrepancies found shall be brought to the attention of YMD Boon Ltd prior to commencement of any building works.  
THIS DRAWING IS TO BE READ IN COLOUR PRINT.

CDM - RESIDUAL RISKS  
The following are considered to be significant risks relevant to this drawing, which could not be fully mitigated or removed through design. Further possible control measures have been identified within the Design Risk Assessments which may help to mitigate these and other identified risks further during the construction / maintenance process.

Rev.	Description	Date	Drawn	Check
------	-------------	------	-------	-------

TENDER

**ymd boon** Architects & Construction Consultants

4b Anson House, Compass Point Business Park,  
Market Harborough, LE16 9HW  
Tel: 01858 464 482

12 Pride Point Drive, Pride Park, Derby, DE24 8BX  
Tel: 01332 293 404 Email: enquiries@ymdboon.co.uk

Client <b>CHRIST THE KING CATHOLIC PRIMARY SCHOOL</b>		
Project <b>REPLACEMENT OF WINDOWS &amp; DOORS</b>		
Scale <b>1:50 @ A1</b>	Date <b>JUN 21</b>	Drawn <b>LC</b>
Drawing Title <b>WINDOW SCHEDULE</b>		Checked
Drawing Number <b>J4804-80</b>		Revision

T:\360\School\360 Thomas Aquinas MAT\J4804-80 Christ The King\J4804 Replacement of Windows & Doors\A-0 Drawing\Proposed